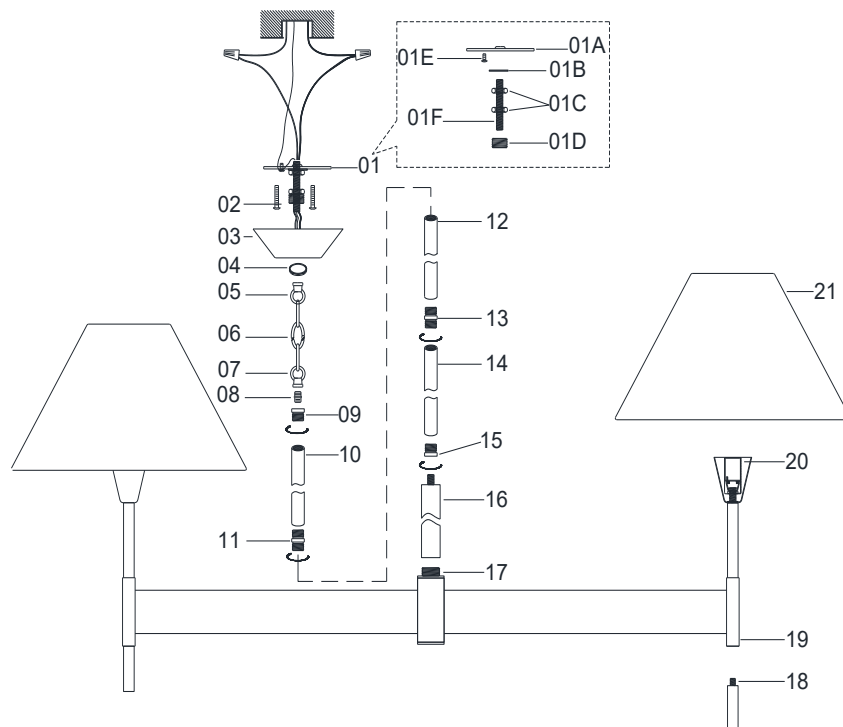




## ASSEMBLY AND INSTALLATION INSTRUCTIONS for the 860821 Fixture

### Important Safety information (Please read before proceeding)

1. Remove the fixture, parts and all mounting hardware bags (orange) from the carton and verify that all parts are present according to the illustration sheet. All parts must be used as indicated. Do not replace any parts, leave any parts out, or use any parts which are worn out or broken. **Failure to follow the instructions could cause a hazardous situation, voids the warranty and violates the U.L. listing of the fixture.**
2. To prevent the electric shock, turn off the main power at the circuit breaker before installing the fixture. **NEVER attempt to install, clean or replace bulbs without shutting off the electricity to the fixture.**
3. **Never use light bulbs with wattage ratings that exceed the fixtures maximum rating.** Always make sure the electric current is turned off before changing the bulbs.
4. If you experience difficulties installing the lighting fixture or it fails to work as expected, please contact a local qualified licensed electrical contractor.
5. Please contact your local Capital Lighting Fixture reseller with any assembly or installation questions. Your local reseller can also provide you with replacement parts for your new fixture.



### Components

- 01. Mounting Bar Assembly
- 02. Outlet Box Mounting Screws
- 03. Canopy
- 04. Threaded Collar
- 05. Loop
- 06. Chain
- 07. Loop
- 08. Coupling (1/8-27IP)
- 09. Reducer (5/8IP to 1/8-27IP)
- 10. 6" Rod
- 11. Coupling (5/8IP)
- 12. 12" Rod
- 13. Coupling (5/8IP)
- 14. 18" Rod
- 15. Reducer (5/8IP to 1/8-27IP)
- 16. Center Tube
- 17. Fixture
- 18. Finials
- 19. Tube Ends
- 20. Sockets
- 21. Fabric Shades

### Note:

- |                   |              |
|-------------------|--------------|
| 01A. Mounting Bar | 01B. Washer  |
| 01C. Hex Nuts     | 01D. Reducer |
| 01E. Green Screw  | 01F. Nipple  |

### Assembly Instructions to CHAIN HANGING COLLAR the 860821 Fixture

1. Pass lead wire from top of Fixture (17) thru Center Tube (16), Reducer (15), 18" Rod (14), Coupling (13), 12" Rod (12), Coupling (11), 6" Rod (10), Reducer (09), [Coupling \(08\)](#), and [Loop \(07\)](#), then screw all parts tightly. *Note: The Fixture Height can be adjusted by varying the number of rods or chain used in the assembly.*
2. Pass lead wire thru [Chain \(06\)](#), [Loop \(05\)](#), Threaded Collar (04), Canopy (03), and Mounting Bar Assembly (01), then tighten Mounting Bar Assembly (01) onto [Loop \(05\)](#). *Note: Don't remove plastic wrap on rod until the canopy installation done to prevent scratches.*
3. Attach Mounting Bar Assembly (01) to Outlet Box with Outlet Box Mounting Screws (02).
4. Raise whole Fixture (17) toward outlet box, wrap fixture grounding wire around Green Screw on Mounting Bar Assembly (01), then connect it to outlet box grounding wire with wire connector supplied; connect the common wire of the lamp cord to the power supply white wire with wire connector supplied; connect supply wire of the lamp cord to the power supply black wire with wire connector supplied. *Note: This fixture is wired using 2 conductor Lamp cord. The insulation between the two conductors on the lamp cord can be split down the center for better access to the two conductors. The common wire on the lamp cord is identified as the conductor with ribs embossed in the rubber wire insulation.*
5. Slip Canopy (03) to ceiling, and verify all wires are securely inside Canopy (03), then secure Canopy (03) to ceiling with Threaded Collar (04).
6. Screw Finials (18) onto Tube Ends (19).
7. Place Fabric Shades (21) onto Sockets (20).

### Note: Guide for how to build Mounting Bar Assembly (01) if receiving all individual components in the box.

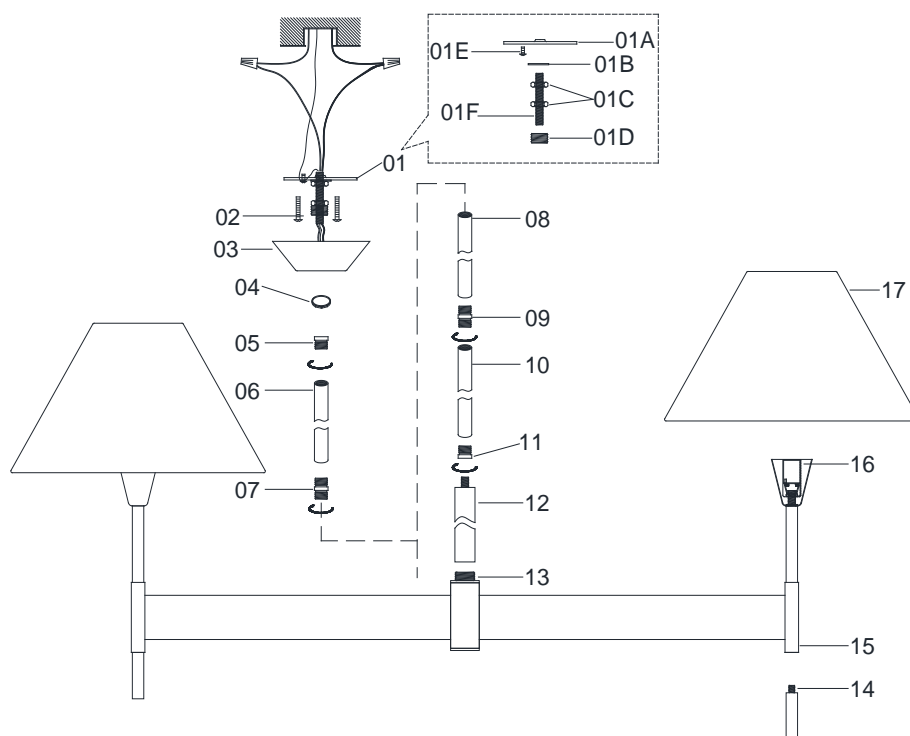
1. Take Nipple (01F) from parts bag and screw in Reducer (01D), and run one Hex Nut (01C) with Washer (01B) down Nipple (01F), then screw Nipple (01F) into Mounting Bar (01A). Mounting Bar (01A) must be positioned with extruded thread faced into Outlet Box. Nipple (01F) must protrude out the back of Mounting Bar (01A).
2. Attach Mounting Bar (01A) to Outlet Box with Outlet Box Mounting Screws (02).
3. Unscrew Threaded Collar (04) from Reducer (01D). Take Canopy (03) and pass over Reducer (01D). Approximately one half of the Reducer exterior threads should be exposed. Adjust Reducer (01D) by turning assembly up or down in Mounting Bar (01A). Remove Canopy (03).
4. After desired position is found, tighten Nipple (01F) with one Hex Nut (01C) onto Reducer (01D) and tighten another Hex Nut (01C) with Washer (01B) against the Mounting Bar (01A).



## ASSEMBLY AND INSTALLATION INSTRUCTIONS for the 860821 Fixture

### Important Safety information (Please read before proceeding)

1. Remove the fixture, parts and all mounting hardware bags (orange) from the carton and verify that all parts are present according to the illustration sheet. All parts must be used as indicated. Do not replace any parts, leave any parts out, or use any parts which are worn out or broken. **Failure to follow the instructions could cause a hazardous situation, voids the warranty and violates the U.L. listing of the fixture.**
2. To prevent the electric shock, turn off the main power at the circuit breaker before installing the fixture. **NEVER attempt to install, clean or replace bulbs without shutting off the electricity to the fixture.**
3. **Never use light bulbs with wattage ratings that exceed the fixtures maximum rating.** Always make sure the electric current is turned off before changing the bulbs.
4. If you experience difficulties installing the lighting fixture or it fails to work as expected, please contact a local qualified licensed electrical contractor.
5. Please contact your local Capital Lighting Fixture reseller with any assembly or installation questions. Your local reseller can also provide you with replacement parts for your new fixture.



### Components

- 01. Mounting Bar Assembly
- 02. Outlet Box Mounting Screws
- 03. Canopy
- 04. Threaded Collar
- 05. Reducer (5/8IP to 1/8-27IP)
- 06. 6" Rod
- 07. Coupling (5/8IP)
- 08. 12" Rod
- 09. Coupling (5/8IP)
- 10. 18" Rod
- 11. Reducer (5/8IP to 1/8-27IP)
- 12. Center Tube
- 13. Fixture
- 14. Finials
- 15. Tube Ends
- 16. Sockets
- 17. Fabric Shades

### Note:

- 01A. Mounting Bar
- 01B. Washer
- 01C. Hex Nuts
- 01D. Reducer
- 01E. Green Screw
- 01F. Nipple

### Assembly Instructions to ROD MOUNT the 860821 Fixture

1. Pass lead wire from top of Fixture (13) thru Center Tube (12), Reducer (11), 18" Rod (10), Coupling (09), 12" Rod (08), Coupling (07), 6" Rod (06), and Reducer (05), then screw all parts tightly. *Note: The Fixture Height can be adjusted by varying the number of rods or chain used in the assembly.*
2. Pass lead wire thru Threaded Collar (04), Canopy (03), and Mounting Bar Assembly (01), then tighten Mounting Bar Assembly (01) onto Reducer (05). *Note: Don't remove plastic wrap on rod until the canopy installation done to prevent scratches.*
3. Attach Mounting Bar Assembly (01) to Outlet Box with Outlet Box Mounting Screws (02).
4. Raise whole Fixture (13) toward outlet box, wrap fixture grounding wire around Green Screw on Mounting Bar Assembly (01), then connect it to outlet box grounding wire with wire connector supplied; connect the common wire of the lamp cord to the power supply white wire with wire connector supplied; connect supply wire of the lamp cord to the power supply black wire with wire connector supplied. *Note: This fixture is wired using 2 conductor Lamp cord. The insulation between the two conductors on the lamp cord can be split down the center for better access to the two conductors. The common wire on the lamp cord is identified as the conductor with ribs embossed in the rubber wire insulation.*
5. Slip Canopy (03) to ceiling, and verify all wires are securely inside Canopy (03), then secure Canopy (03) to ceiling with Threaded Collar (04).
6. Screw Finials (14) onto Tube Ends (15).
7. Place Fabric Shades (17) onto Sockets (16).

### Note: Guide for how to build Mounting Bar Assembly (01) if receiving all individual components in the box.

1. Take Nipple (01F) from parts bag and screw in Reducer (01D), and run one Hex Nut (01C) with Washer (01B) down Nipple (01F), then screw Nipple (01F) into Mounting Bar (01A). Mounting Bar (01A) must be positioned with extruded thread faced into Outlet Box. Nipple (01F) must protrude out the back of Mounting Bar (01A).
2. Attach Mounting Bar (01A) to Outlet Box with Outlet Box Mounting Screws (02).
3. Unscrew Threaded Collar (04) from Reducer (01D). Take Canopy (03) and pass over Reducer (01D). Approximately one half of the Reducer exterior threads should be exposed. Adjust Reducer (01D) by turning assembly up or down in Mounting Bar (01A). Remove Canopy (03).
4. After desired position is found, tighten Nipple (01F) with one Hex Nut (01C) onto Reducer (01D) and tighten another Hex Nut (01C) with Washer (01B) against the Mounting Bar (01A).